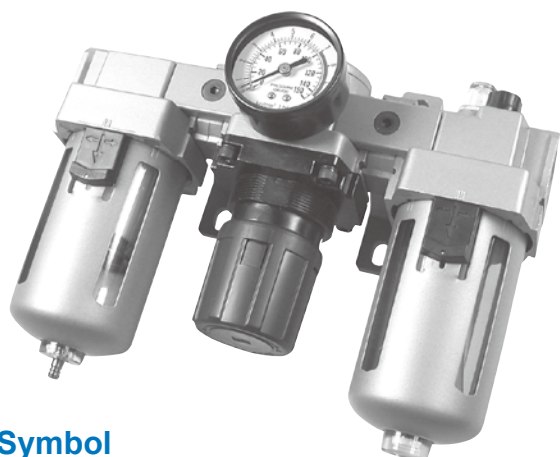
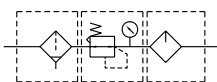


MACT402 series

AIR UNIT (F.R.L.UNIT)



Symbol



Order example

MACT402 - 20A - D - □ - □

MODEL

BORE SIZE
 10A: 3/8
 15A: 1/2
 20A: 3/4

FILTER ELEMENT
 Blank: 40μm
 5u: 5μm
 20u: 20μm

PORT THREAD
 Blank: Rc thread
 G: G thread
 NPT: NPT thread

D: Auto drain valve (YD401)

Specification

Model	MACT402		
Components	MAF402, MAR402, MAL402		
Bore No.	10A	15A	20A
Port size	3/8	1/2	3/4
Medium	Air		
Operating pressure range (*)	0.05~1 MPa		
Proof pressure	1.5 MPa		
Regulated pressure range	0.05~0.85 MPa		
Ambient temperature	- 5~+60°C (No freezing)		
Filter element	Standard: 40μm Option: 5,20μm		
Lubricating oil capacity	180c.c		
Min. flow for oil drip	200 ℓ/min		
Recommended lubricating oil	Turbine oil ISO-VG32		
Attachment	Pressure gauge(PG-50), bracket		
Weight	2392 g		

* Standard unit contains semi-auto-drain function when operating pressure below 0.05 MPa.

Flow feature

