

# MAR900 series

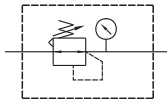
## PRESSURE REGULATOR



Mindman



### Symbol



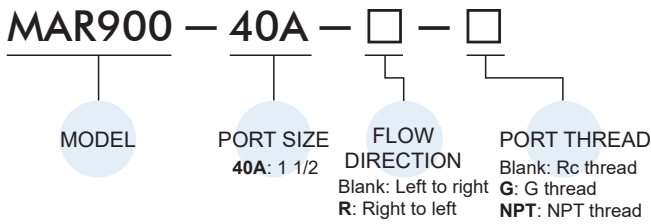
- MAR900 reducing the system pressure to a desired level and maintain it at a constant level despite change in inlet pressure and changes in downstream flow requirements.

### Specification

Model	MAR900
Bore No.	40A
Port size	1 1/2
Medium	Air
Max. operating pressure	2.1 MPa
Regulated pressure range	0.09~0.86 MPa
Ambient temperature	0~+80°C (No freezing)
Standard nominal flow rate(*)	11000 $\text{d}/\text{min}$
Attachment	Pressure gauge (PG-50)
Weight	1208 g

\* Flow is at 1 MPa supply pressure and 0.1 MPa pressure drop of 0.6 MPa of secondary pressure.

### Order example



### Flow feature

